

## TransLink Moodyville Proposal: Sun-Shadow Study Summary

The sun/shadow study demonstrates the shadows cast by the proposed development at 10am, 12 noon, 2pm, and 4pm in each season:

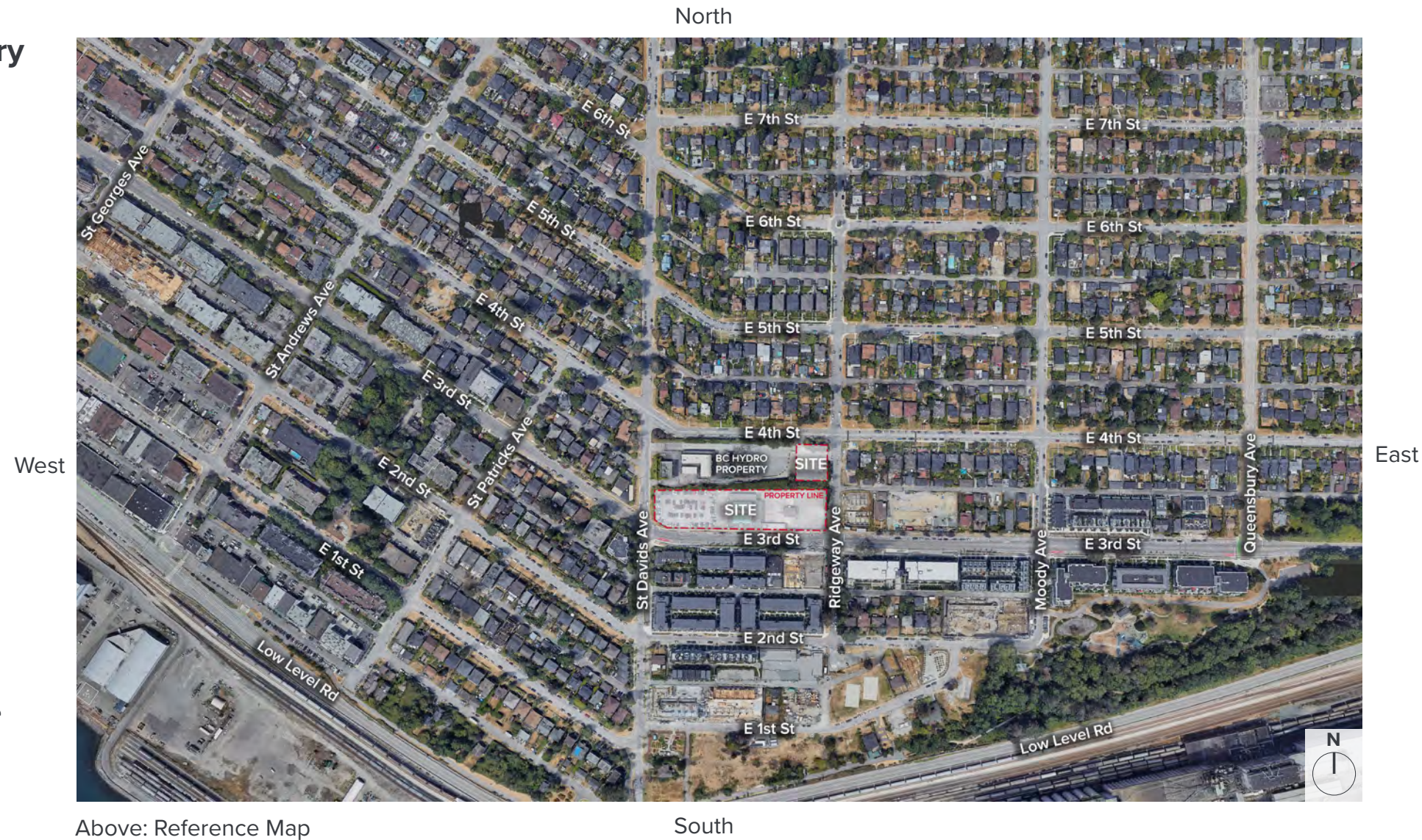
- March 21
- June 21 – when shadows are shortest
- September 21
- December 21 – when shadows are longest

The sun/shadow study has been conducted in compliance with applicable City of North Vancouver requirements.

The study is available on TransLink’s webpage:

<https://www.translink.ca/about-us/doing-business-with-translink/real-estate/moodyville>

*Note that the study includes high resolution graphics and is best viewed from a desktop or laptop computer.*



Above: Reference Map

South

**March Results**

<b>10am</b>	<ul style="list-style-type: none"> <li>No shadow impacts on residential properties to the north, south or east</li> <li>No shadow impacts to the west except partial shadowing on 422 East 3<sup>rd</sup></li> </ul>
<b>12 noon</b>	<ul style="list-style-type: none"> <li>No shadow impacts on residential properties to the north, south or east</li> <li>No shadow impacts to the west except partial shadowing on 333 East 4<sup>th</sup></li> </ul>
<b>2pm</b>	<ul style="list-style-type: none"> <li>No shadow impacts on residential properties to the north, south, east or west</li> </ul>
<b>4pm</b>	<ul style="list-style-type: none"> <li>No shadow impacts on residential properties to the north, south, or west</li> <li>No shadow impacts to the east except partial shadowing on 503 East 4<sup>th</sup></li> </ul>

**June Results**

<b>10am</b>	<ul style="list-style-type: none"> <li>No shadow impacts on residential properties to the north, south or east</li> <li>No shadow impacts to the west except partial shadowing on 422 East 3<sup>rd</sup></li> </ul>
<b>12 noon</b>	<ul style="list-style-type: none"> <li>No shadow impacts on residential properties to the north, south, east or west</li> </ul>
<b>2pm</b>	<ul style="list-style-type: none"> <li>No shadow impacts on residential properties to the north, south, east or west</li> </ul>
<b>4pm</b>	<ul style="list-style-type: none"> <li>No shadow impacts on residential properties to the north, south, east or west</li> </ul>

**September Results**

<b>10am</b>	<ul style="list-style-type: none"> <li>No shadow impacts on residential properties to the north, south or east</li> <li>No shadow impacts to the west except partial shadowing on 422 East 3<sup>rd</sup></li> </ul>
<b>12 noon</b>	<ul style="list-style-type: none"> <li>No shadow impacts on residential properties to the north, south or east</li> <li>No shadow impacts to the west except partial shadowing on 333 East 4<sup>th</sup></li> </ul>
<b>2pm</b>	<ul style="list-style-type: none"> <li>No shadow impacts on residential properties to the north, south, east or west</li> </ul>
<b>4pm</b>	<ul style="list-style-type: none"> <li>No shadow impacts on residential properties to the north, south, or west</li> <li>No shadow impacts to the east except partial shadowing on 503 East 4<sup>th</sup></li> </ul>

**December Results**

<b>10am</b>	<ul style="list-style-type: none"> <li>No shadow impacts on residential properties to the south or east</li> <li>Shadowing extends to the mid-block between St Andrews &amp; St Georges Ave, as far north as the south side East 5th</li> </ul>
<b>12 noon</b>	<ul style="list-style-type: none"> <li>No shadow impacts on residential properties to the south or east</li> <li>Shadowing extends just west of St David's, as far north as the south side of East 5th</li> </ul>
<b>2pm</b>	<ul style="list-style-type: none"> <li>No shadow impacts on residential properties to the south, east or west</li> <li>Shadowing extends to the south side of East 5th</li> </ul>
<b>4pm</b>	<ul style="list-style-type: none"> <li>No shadow impacts on residential properties to the south or west</li> <li>Shadowing extends no further than the mid-block between Ridgeway and Moody Ave, as far north the north side of East 5th</li> </ul>